



SEAL® 54 EL Laminator



The SEAL 54 EL is a high quality, affordably priced cold roll laminator specifically designed for new users to confidently create professionally-finished wide format graphics. Built for safety and ease of use, this sturdy machine is just right for laminating and mounting pressure-sensitive graphics up to 54" wide. Its durable uniframe construction requires no assembly and minimal maintenance. Made in the U.S.A. and backed by the most dependable manufacturer in the industry, the 54 EL is a smart option for entrance into the wide format graphics market.

The SEAL 54 EL provides the following features:

Optimum performance

- High quality, professional finishing results
- Manually adjustable nip to 1" for easy handling of most any substrate
- Durable uniframe construction
- Fast 14ft/min production speed
- Best warranty in the industry

Ease of use

- Auto-grip shafts
- Roll feed capable
- Additional supply shaft storage available
- Simple controls
- Minimal maintenance
- Flip up in-feed table for easy webbing

Safety

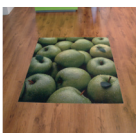
- ETL listed for US/Canada
- CE approved
- Foot switch for hands free operation
- Safety eyes for increased operator safety

Incorporating technology and intelligence from the SEAL family of machines, the 54 EL combines a sturdy industrial level design with uncomplicated operation at an entry-level price point. It includes simple controls, a flip up in-feed table for easy webbing, new light weight auto-grip shafts and a manually adjustable nip to 1" for easy handling of most substrates.

As with all SEAL laminators, the 54 EL is manufactured in the U.S.A. at our ISO Certified facility and offers the best warranty in the industry. With its CE and ETL certifications, owners can have peace of mind in the safety and reliability of the this machine. The 54 EL is a smart choice for entrance into the wide format graphics market.

The SEAL 54 EL is ideal for a wide variety of display applications.

Creating Decals



Applying Pre-mask



Mounting to Rigid Substrates



Single Sided Lamination

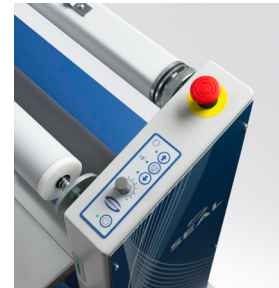


SEAL® 54 EL

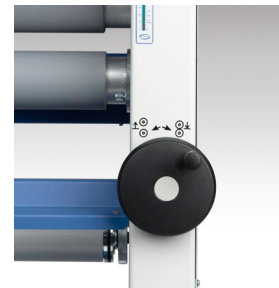
Technical Specifications

| | English | Metric |
|--|--|---------------------|
| Max. Working Width | 54" maximum | 1372 mm max |
| Max. Speed | 14 ft/min | 4.25 m/min |
| Dimensions (HxWxD) | 48" x 22.1/2" x 75.1/4" | 1219 x 1911 x 572mm |
| Shipping dimensions (HxWxD) | 54" x 74 3/4" x 25" | 1372 x 1899 x 635mm |
| Weight | | |
| Net Weight | 325 lbs | 147 kg |
| Shipping Weight | 440 lbs | 200 kg |
| Maximum roll diameter | | |
| Unwind | 8" | 200 mm |
| Take-up | 6" | 150mm |
| Maximum roll weight | | |
| Unwind | 85 lbs | 38.5 kg |
| Take-up | 35 lbs | 15.9 kg |
| Roller Opening (Min. – Max.) | 0 – 1" | 0 – 25mm |
| Roller Pressure | 3 lbf/in | 0.53 N/mm |
| Electrical Specifications | | |
| US/Canada | 115 VAC, 50/60Hz, 1A, 115W - NEMA 5-15 Plug | |
| Europe | 230 VAC, 50/60Hz, 0.5A, 115W - BS1363 Plug or Continental Europe Plug (Schuko style) | |
| Roller Construction | Two silicone covered steel rollers | |
| SEAL 54 EL Part Number | 54545 | |
| Optional Equipment Part Numbers | | |
| Roll Trough - Factory/Field Installed | 5401/5402 | |
| Autogrip Shaft Storage Kit - Factory/Field Installed | 5403/5404 | |

* Specifications may change without notice.



Ergonomic control panel for ease of use.



Manual nip adjustment with height gauge for precise operation.



Heavy duty rear stabilizing feet.



Light-weight auto grip shafts for user friendly webbing.

Neschen Americas
7091 Troy Hill Drive
Elkridge, MD 21075
U.S.A.

Tel: 800-257-7325
Local: 410-540-8900
Fax: 800-966-4554

Neschen Americas Canada
1601 Matheson Blvd E., Unit 4
Mississauga, Ontario
Canada L4W 1H9



ATM COMERCIAL S.A.

TEL: 2296 0070 • FAX: 2231 3615

PAVAS, DE LA EMBAJADA DE USA, 400 0 Y 25 N, SAN JOSÉ, COSTA RICA
WWW.ATMCOMERCIAL.COM • ATM COMERCIAL SA • @ATMCOMERCIAL

