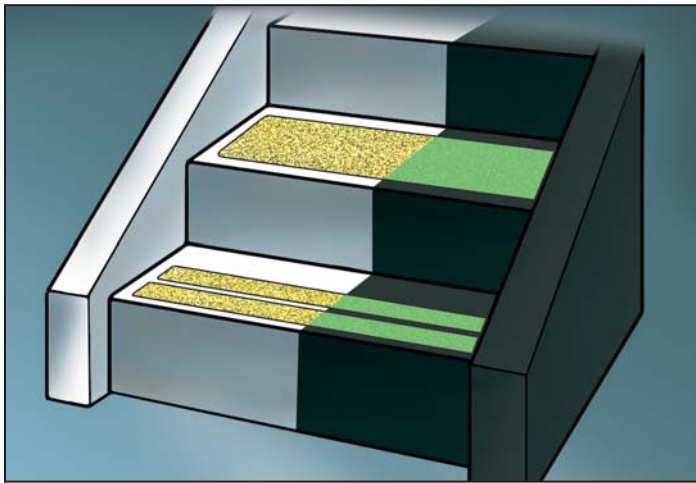


J E S S U P



GLO BRITE® SAFETY TRACK®

In an emergency situation, there is always the possibility of panic and the risk of serious injury due to slips and falls. Glo Brite® / Safety Track® is non-skid, mineral-coated photoluminescent tape that provides unsurpassed, non-slip protection on hazardous surfaces. Because Glo Brite® / Safety Track® absorbs and stores energy from ambient light, it is instantly visible in event of darkness. Glo Brite® / Safety Track® easily adheres to most surfaces, making it ideal for stairs and other potentially slick surfaces that are part of your low-level emergency egress system.



© Jessup 2006

SAFETY TRACK® RESILIENT 3510-BLACK 3520-GRAY

Safety Track® Resilient is a rubberized version of our original Safety Track® 3100 and 3200 Coarse. And because it's made of a rubberized material, it's comfortable enough for bare foot traffic, yet tough enough to withstand heavy boot, shoe, or cart traffic. Engineered as a premier performer, 3500 Resilient is a perfect solution for helping to prevent slips and falls on most industrial and commercial applications.



© Jessup 2006

PRODUCT	NUMBERS
Glo Brite®	3420/3450 – 2" x 60' Roll (6 rolls/case)
Safety Track®	3420/3450 – 3" x 60' Roll (4 rolls/case)
3420/3450 Series	3420/3450 – 4" x 60' Roll (3 rolls/case)
	3420/3450 – 6" x 60' Roll (2 rolls/case)
	3420/3450 – 12" x 60' Roll (1 roll/case)
	3420/3450 – 18" x 60' Roll (1 roll/case)
	3420/3450 – 24" x 60' Roll (1 roll/case)
	3420/3450 – 6" x 24" (50 pcs/case)
	3420/3450 – 6" x 24"-10 (10 pcs/case)
	3420/3450 – 3 – ARW – 20 (20 pcs/pack – 10 packs/case)
	3420/3450 – 3 – CIR – 20 (20 pcs/pack – 10 packs/case)



PRODUCT	NUMBERS
Safety Track®	1" x 60' Roll (12 rolls/case)
3510 & 3520	18" x 60' Roll (1 roll/case)
Resilient Series	2" x 60' Roll (6 rolls/case)
	24" x 60' Roll (1 roll/case)
	3" x 60' Roll (4 rolls/case)
	36" x 60' Roll (1 roll/case)
	4" x 60' Roll (3 rolls/case)
	48" x 60' Roll (1 roll/case)
	6" x 60' Roll (2 rolls/case)
	6" x 24" (50 pcs/case)
	12" x 60' Roll (1 roll/case)
	6" x 24" (10 pcs/case)



TECHNICAL DATA	
Construction:	Abrasive grain-coated plastic film, with one side pressure-sensitive adhesive and protected by removable liner
Thickness:	.035 +/- 4%
Color:	White/Green (normal light conditions)
Illumination:	High Visibility Yellow/Green
Durability:	Long life, durable and resistant to traffic, water and grease
Standards:	Exceeds OSHA Standards for non-slip protection on hazardous surfaces; Motor Vehicle Safety Standard No. 302; MIL-D-17951 C (Ships), and ASTM E 2030-02, ASTM E 2072-00, ASTM E 2073-02
Installation:	Position, peel-off backing and apply to dry, non-oily surface Minimum application temperature 50° F
Surface Compatibility:	Painted wood, painted metal, sealed concrete and most nonporous surfaces
Storage Life:	One year @ 72° F/50% relative humidity
Availability:	Roll lengths: 60 feet; Roll widths: 2", 3", 4", 6", 12", 18", 24" Die cuts: 6" x 24"; 3" arrows ; 3" circles Custom die cuts and other sizes available upon request

TECHNICAL DATA	
Surface Compatibility:	Painted wood, painted metal, sealed concrete
Application Temperature:	Apply when above 50° F
Storage Life:	1 Year @ 72° F/50% relative humidity
Standard Sizes:	Roll Lengths: 60' Roll Widths: 1", 2", 3", 4", 6", 12", 18", 24", 36", 48" Die Cut: 6" x 24" Custom die cuts and other sizes available on request
Product Description:	Laminated, calendered film is characterized by moderate tensile strength, high elongation, and good tear strength. Calendering built-in stresses are a common cause of film shrinkage and can affect dimensional stability.
Available Colors:	Gray, Black Custom colors available upon request

GLO BRITE® SAFETY GUIDANCE SYSTEM

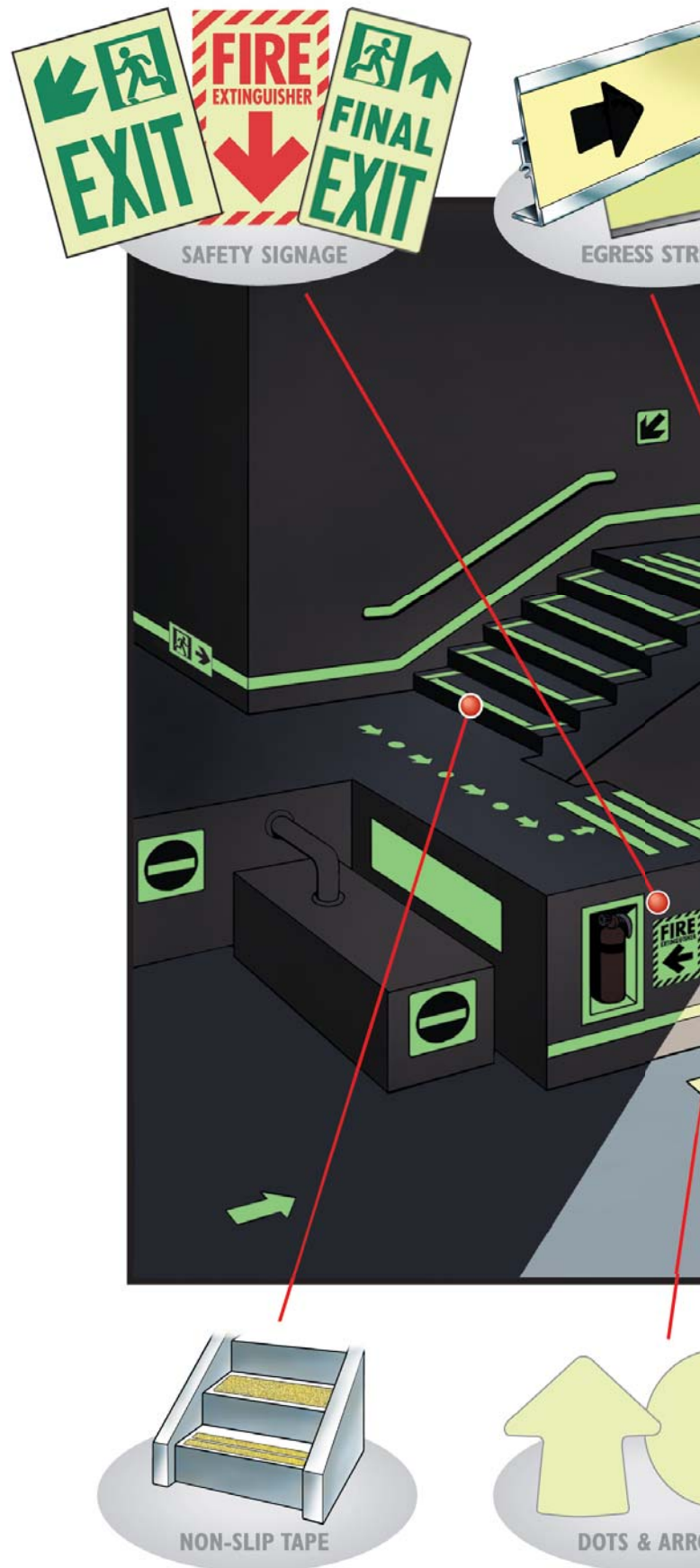
Safety is the most important reason to install a photoluminescent directional system for evacuation during sudden blackout or smoke-laden conditions. The reliable **Glo Brite® Safety Guidance System** is a complete system of non-electric, photoluminescent safety components essential for comprehensive low-level emergency evacuation route.

The **Glo Brite®** components are non-electric, non-toxic and non-radioactive. Using the latest photoluminescent technology, the **Glo Brite®** pigment absorbs and stores normal ambient light in the event of a sudden power outage, the stored energy is immediately visible, enabling the **Glo Brite® Safety Guidance System** to provide a safe illuminated path through dark stairwells, hallways and rooms.

The **Glo Brite® Safety Guidance System** is easy and low-cost to install, and because there are no bulbs to burn out, the system is virtually maintenance-free, periodic inspection for 25+ years.

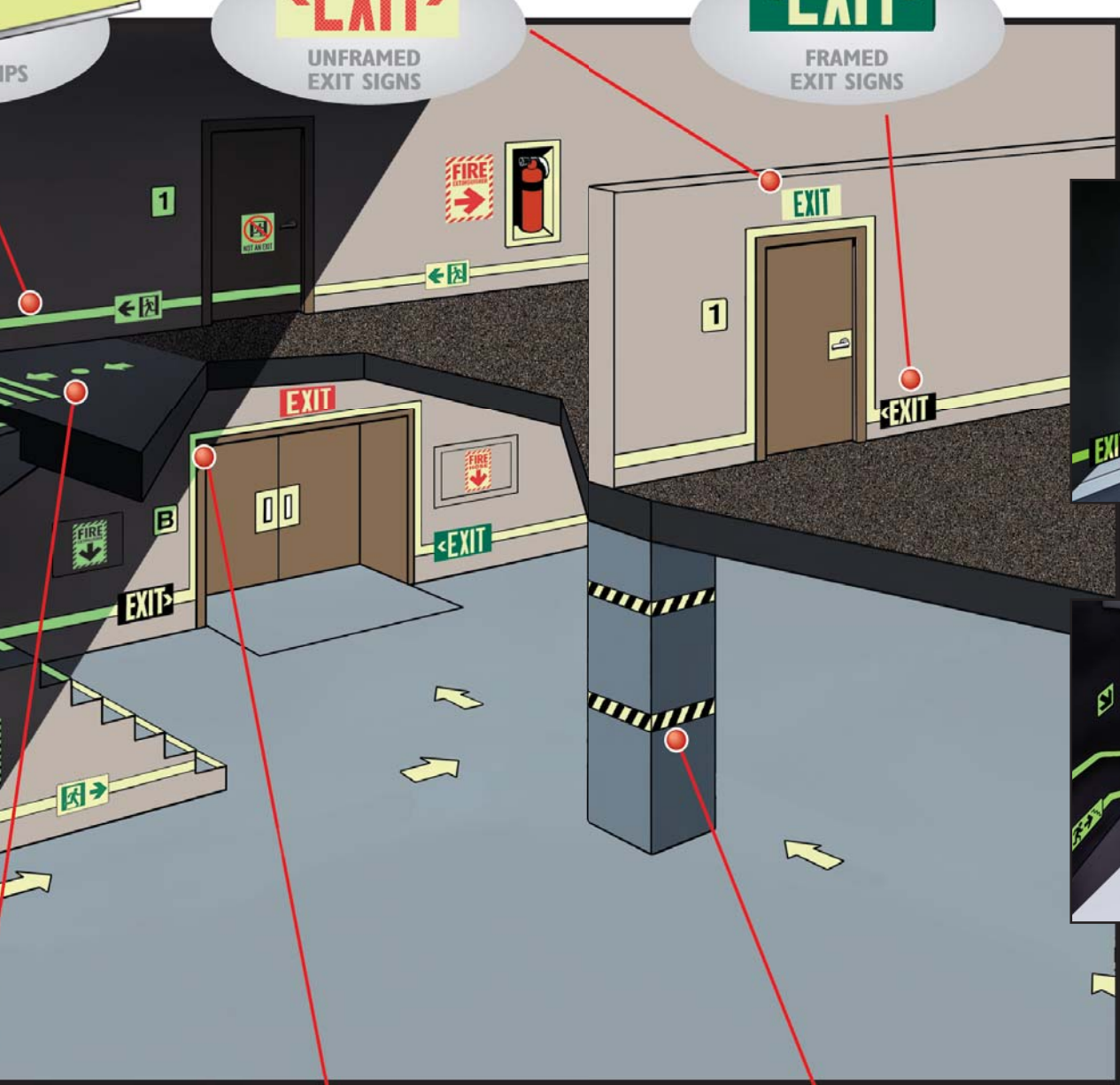
Safety + Reliability + Energy Savings = The Glo Brite® Safety Guidance System.

When it comes to peace of mind, it all adds up!





CCMC
13211-R



© Jessup 2006



GLO BRITE® FRAMED EXIT/SORTIE SIGNS

The Next Generation in Exit Sign Technology

A component of the Glo Brite® Safety Guidance System of photoluminescent products

Unparalleled in reliability, Glo Brite® Exit Signs utilize the latest photoluminescent technology to absorb and store ambient fluorescent light. In the event of an emergency with blackout or smoky conditions this stored energy is immediately visible, creating a clearly recognizable, photoluminescent egress indicator. Glo Brite® Exit Signs reduce the risk of panic or injury during an evacuation, offering greater peace of mind while saving on energy costs.

Features

- Requires no additional electricity to operate
- Reliability
- Non-toxic, non-radioactive
- Low-cost, easy installation
- Designed for surface, flag or ceiling mounting
- Can be used for both high-level and low-level applications
- Requires virtually no maintenance, periodic inspections, for 25+ years
- Thin, low profile construction
- Consistent, uniform illumination
- Visible at 50 feet in total blackout
- Saves on energy costs
- Listed to UL 924 through UL, ICC ES #6040 meeting all current building codes, meets NFPA Life Safety Code 101 and OSHA requirements
- CCMC Evaluation Report CCMC 13211R

Technical Information

- Sizes: 8" x 15" x 1/4" (Sortie 8" x 22.1875" x 1/4")
- Letter Size: 7/8" stroke with 7" height
- Background: Black, Red, Green or White
- Illumination: High Visibility Green
- Visibility: 50 feet
- Directional: Pop-out chevron arrows for easy direction selection
- Construction: .035 steel and a plastic photoluminescent panel
- Durability: Explosion-proof for areas requiring explosion-proof exit signage
- Tests Passed: UL 924 Emergency Lighting and Power Equipment Listed through UL; ICC ES # 6040; California State Fire Marshall listing #6200-1617; 100; City of Los Angeles Research Report: RR 25531 (CSI #16530); Ontario Building Material Evaluation Commission Authorization Report BMEC #03-12-291; CCMC 13211-R

- Life Expectancy: 25+ years
- Power Requirements: NO additional electrical or mechanical source required
- Installation: Surface, flag or ceiling mounted (hardware included). Before installation it must be determined that there is a minimum of 54 lux of fluorescent, metal halide or mercury vapor light on the face(s) of the sign at all times during building occupancy.
- Applications: Both high-level and low-level

Models Available:

Exit Black	Exit Red	Exit Green	Exit White	Sortie Red	
7001	7011	7021	7031	7013	Single face sign (wall mount)
7001 - B	7011 - B	7021 - B	7031-B	7013-B	Single face sign with mounting bracket
7002 - B	7012 - B	7022 - B	7032-B	7014-B	Double face sign with mounting bracket
7000 - B	7010 - B	7020 - B	7030-B	7010-B	Mounting bracket
7000 - B2					Clear mounting clip (4 pc/bag & 10 bag/case)

Other photoluminescent components of the Glo Brite® Safety Guidance System include Glo Brite® Egress Pathway Strips, Glo Brite® Tape, Glo Brite® Dots and Arrows, Glo Brite® Stripe Tape, Glo Brite® Safety Track, and Glo Brite® Safety Signage.



© Jessup 2006



© Jessup 2006



CCMC
13211-R

GLO BRITE® UNFRAMED EXIT/SORTIE SIGNS

The Next Generation in Exit Sign Technology

A component of the Glo Brite® Safety Guidance System of photoluminescent products

Unparalleled in reliability, Glo Brite® Exit Signs utilize the latest photoluminescent technology to absorb and store ambient fluorescent light. In the event of an emergency with blackout or smoky conditions this stored energy is immediately visible, creating a clearly recognizable, photoluminescent egress indicator. Glo Brite® Exit Signs reduce the risk of panic or injury during an evacuation, offering greater peace of mind while saving on energy costs.

Features

Requires no additional electricity to operate

Reliability

Non-toxic, non-radioactive

Low-cost, easy installation

Can be used for both high-level and low-level applications

Requires virtually no maintenance, periodic inspections, for 25+ years

Thin, low profile construction

Consistent, uniform illumination

Visible at 50 feet in total blackout

Saves on energy costs

Listed to UL 924 through UL, ICC ES #6040 meeting all current building codes, meets NFPA Life Safety Code 101 and OSHA requirements

CCMC Evaluation Report CCMC 1324-R

Technical Information

Sizes: 7.5" x 13" x .075" (7280 = 10" x 17" x .075")
(Sortie 7.5"x 18.125"x .075")

Letter size: .8125" stroke with 6" height (7280 = 1" stroke with 8" height)

Background: Photoluminescent

Illumination: High Visibility Green

Visibility: 50 feet

Directional: 2 included

Construction: Plastic photoluminescent panel/red or green lettering

Durability: Explosion-proof for areas requiring explosion-proof exit signage

Tests Passed: UL 924 Emergency Lighting and Power Equipment

Listed through UL; ICC ES # 6040, California State Fire Marshall

listing #6200-1617; 100; City of Los Angeles Research Report:

RR 25531 (CSI #16530); Ontario Building Material Evaluation

Commission Authorization Report BMEC #03-12-291;CCMC 13211-R

Life Expectancy: 25+ years

Power Requirements: NO additional electrical or mechanical source required

Installation: Surface mounted. Before installation it must be determined that there is a minimum of 54 lux of fluorescent, metal halide or mercury vapor light on the face(s) of the sign at all times during building occupancy.

Applications: Both high-level and low-level

Models Available:

Exit Red	Exit Green	Sortie Red	
7210	7310	7211	Single face sign (wall mount) printed letters
7220	7320		Single face sign (wall mount) reflective letters
7280			Single face sign (wall mount) 8" printed letters

Other photoluminescent components of the Glo Brite® Safety Guidance System include Glo Brite® Egress Pathway Strips, Glo Brite® Tape, Glo Brite® Dots and Arrows, Glo Brite® Stripe Tape, Glo Brite® Safety Track, and Glo Brite® Safety Signage.



7210



7220



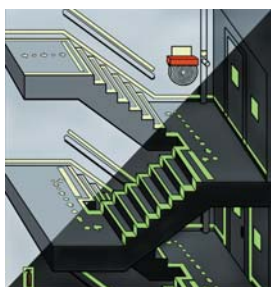
7310



7320



7211



© Jessup 2006



© Jessup 2006



CCMC
13211-R

GLO BRITE® TAPE

Using the latest photoluminescent technology, Glo Brite® Tape is a flexible laminated film that absorbs and stores energy from ambient light. In the event of a power outage this tape is immediately visible, providing people with a clearly illuminated evacuation route. Because Glo Brite® Tape easily affixes to walls, handrails, columns, around doorframes, and along stairways and baseboards, it is ideal for your low-level emergency egress system.



© Jessup 2006

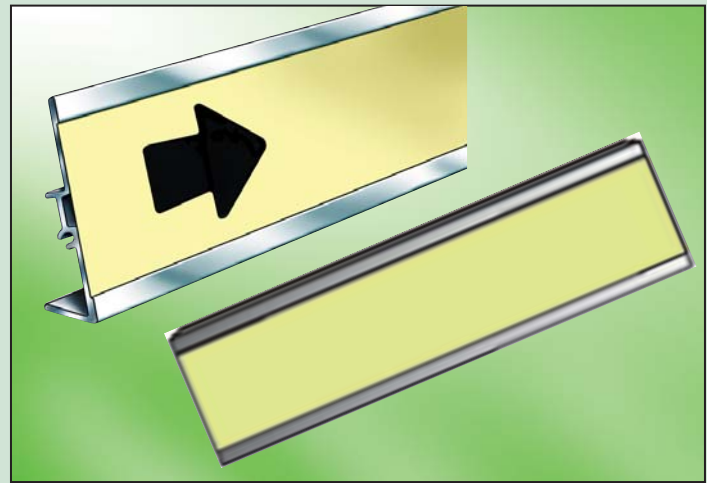
PRODUCT NUMBERS

Glo Brite® 7520	Glo Brite® 7530	Glo Brite® 7550	Glo Brite® 7550-HT	Glo Brite® 7560
7520 - 1 (6 rls/cs)	7530 - 1 (6 rls/cs)	7550 - 1 (6 rls/cs)	7550 - HT - 1 (6 rls/cs)	7560 - 1 (6 rls/cs)
7520 - 2 (3 rls/cs)	7530 - 2 (3 rls/cs)	7550 - 2 (3 rls/cs)	7550 - HT - 2 (3 rls/cs)	7560 - 2 (3 rls/cs)
7520 - 3 (2 rls/cs)	7530 - 3 (2 rls/cs)	7550 - 3 (2 rls/cs)	7550 - HT - 3 (2 rls/cs)	7560 - 3 (2 rls/cs)
7520 - 6 (1 rl/cs)	7530 - 6 (1 rl/cs)	7550 - 6 (1 rl/cs)	7550 - HT - 6 (1 rl/cs)	7560 - 6 (1 rl/cs)

(* 7550 - HT (High Tack) designed for low energy surfaces and porous substrates)

GLO BRITE® EGRESS PATHWAY STRIPS

Glo Brite® Egress Pathway Strips are durable aluminum extrusions with inset photoluminescent tape. Designed to absorb and store energy from ambient light, these strips are immediately visible in the event of a blackout. Glo Brite® Egress Pathway Strips affix easily to walls and along handrails to provide a continuous egress pathway in an emergency.



© Jessup 2006

PRODUCT

NUMBERS

Aluminum / Plastic Extrusions -

Glo Brite® 7500 - EXT - 2X6
EXT - 2

Tape - (sold separately)

Glo Brite® 7520 - 1" / 2"
Glo Brite® 7530 - 1" / 2"
Glo Brite® 7550 - 1" / 2"
Glo Brite® 7560 - 1" / 2"

End Caps

Glo Brite® 7500 - END CAP - 10

TECHNICAL DATA

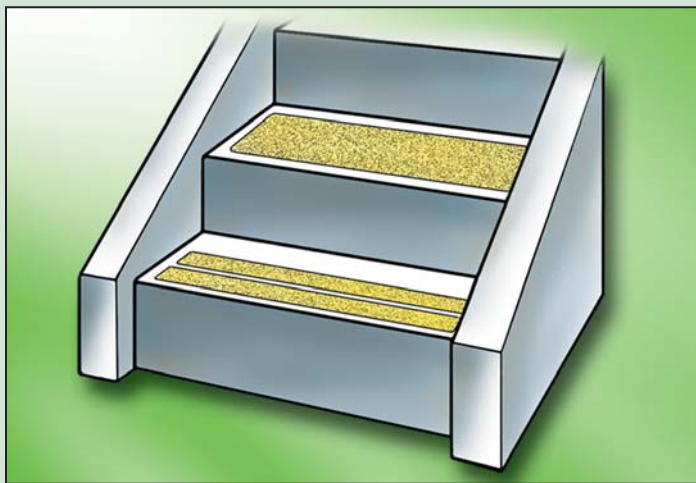
Construction:	Flexible laminated film, coated with permanent acrylic pressure-sensitive adhesive and backed by poly-coated release liner
Thickness:	.010 +/- 10% (film/adhesive)
Color:	White/Green (normal light conditions)
Illumination:	High Visibility Yellow/Green
UV Stability:	Excellent
Installation:	Position, peel-off backing and apply to dry, non-oily surface Minimum application temperature 50° F
Availability:	1", 2", 3", and 6" x 30FT. Rolls Custom sizes and shapes available upon request

TECHNICAL DATA

Construction:	Aluminum extrusion with photoluminescent 2" tape inset Plastic extrusion with photoluminescent 1" tape inset
Dimensions:	Aluminum extrusion: .60" x 2.314" x 8 ft. Plastic extrusion: 1/4" x 1-3/8" x 8 feet includes Welmount™ foam tape for easy mounting Glo Brite® Tape: 1" x 30 feet (6 rolls/case) 2" x 30 feet (3 rolls/case) End Caps: 1-9/32" x 2-3/8" (nominal)
Color:	Aluminum extrusion: Silver Plastic extrusion: Ivory Glo Brite® Tape: White/Green under normal light conditions
Illumination:	High Visibility Yellow/Green
UV Stability:	Excellent
Installation:	Affix to most surfaces using screws and anchors (provided)
Availability:	Aluminum extrusion: .60" x 2.314" x 8 feet lengths Plastic extrusion: 1/4" x 1-3/8" x 8 feet lengths (10 ea. per bundle) Glo Brite® Tape: 1" x 30-ft. rolls (sold separately) 2" x 30-ft. rolls (sold separately) End Caps: 10 pc/bag (sold separately)

GLO BRITE® SAFETY TRACK® 3400 SERIES

In an emergency situation, there is always the possibility of panic and the risk of serious injury due to slips and falls. Glo Brite® / Safety Track® is non-skid, mineral-coated photoluminescent tape that provides unsurpassed, non-slip protection on hazardous surfaces. Because Glo Brite® / Safety Track® absorbs and stores energy from ambient light, it is instantly visible in event of darkness. Glo Brite® / Safety Track® easily adheres to most surfaces, making it ideal for stairs and other potentially slick surfaces that are part of your low-level emergency egress system.



© Jessup 2006

GLO BRITE® STRIPE TAPE

Glo Brite® Stripe Tape is a flexible laminated, printed film that is perfect for marking pathway obstructions that may be hazardous in blackout and very smoky conditions. This tape absorbs and stores energy from ambient light, and is immediately visible in sudden darkness. Glo Brite® Stripe Tape easily affixes to most wood, metal, concrete, plaster and painted surfaces. Incomparably reliable, Glo Brite® Stripe Tape is perfect for your low-level emergency egress system.



© Jessup 2006

PRODUCT

NUMBERS

Glo Brite®
Safety Track®
3420 Series
3450 Series



- 3420/3450 – 2" x 60' Roll (6 rolls/case)
- 3420/3450 – 3" x 60' Roll (4 rolls/case)
- 3420/3450 – 4" x 60' Roll (3 rolls/case)
- 3420/3450 – 6" x 60' Roll (2 rolls/case)
- 3420/3450 – 12" x 60' Roll (1 roll/case)
- 3420/3450 – 18" x 60' Roll (1 roll/case)
- 3420/3450 – 24" x 60' Roll (1 roll/case)
- 3420/3450 – 6" x 24" (50 pcs/case)
- 3420/3450 – 6" x 24"-10 (10 pcs/case)
- 3420/3450 – 3 – ARW – 20 (20 pcs/pack – 10 packs/case)
- 3420 – 3 – CIR – 20 (20 pcs/pack – 10 packs/case)

PRODUCT

NUMBERS

Glo Brite®
7520 Series

- 7520 – 2 – STRIPE – R
- 7520 – 2 – STRIPE – G
- 7520 – 2 – STRIPE – B

Glo Brite®
7530 Series

- 7530 – 2 – STRIPE – B
- 7530 – 2 – STRIPE – G
- 7530 – 2 – STRIPE – R

Glo Brite®
7550 Series

- 7550 – 2 – STRIPE – R
- 7550 – 2 – STRIPE – G
- 7550 – 2 – STRIPE – B

TECHNICAL DATA

Construction:	Abrasive grain-coated plastic film, with one side pressure-sensitive adhesive and protected by removable liner
Thickness:	.035 +/- 4%
Color:	White/Green (normal light conditions)
Illumination:	High Visibility Yellow/Green
Durability:	Long life, durable and resistant to traffic, water and grease
Standards:	Exceeds OSHA Standards for non-slip protection on hazardous surfaces; Motor Vehicle Safety Standard No. 302; MIL-D-17951C (Ships), and ASTM E 2030-02, ASTM E 2072-00, ASTM E 2073-02
Installation:	Position, peel-off backing and apply to dry, non-oily surface Minimum application temperature 50° F
Surface Compatibility:	Painted wood, painted metal, sealed concrete and most nonporous surfaces
Storage Life:	One year @ 72° F/50% relative humidity
Availability:	Roll lengths: 60 feet; Roll widths: 2", 3", 4", 6", 12", 18", 24" Die cuts: 6" x 24"; 3" arrows; 3" circles Custom die cuts and other sizes available upon request

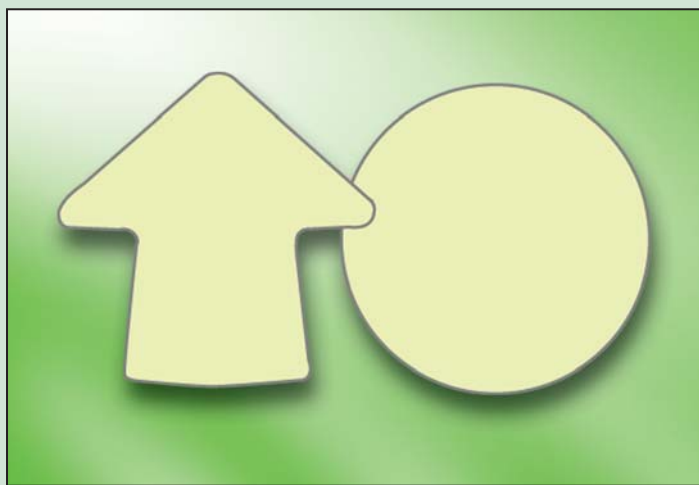
TECHNICAL DATA

Construction:	Flexible laminated, printed film, coated with permanent acrylic pressure-sensitive adhesive and backed by poly-coated release liner
Thickness:	.012 +/- 10% (film/adhesive)
Color:	White/Green with Red, Green or Black striping (normal light conditions)
Illumination:	High Visibility Yellow/Green
UV Stability:	Excellent
Installation:	Position, peel-off backing and apply to dry, non-oily surface Minimum application temperature 50° F
Availability:	2" x 30-ft. rolls (3 rolls/case) Custom sizes available upon request Red, Green or Black striping



GLO BRITE® DOTS AND ARROWS

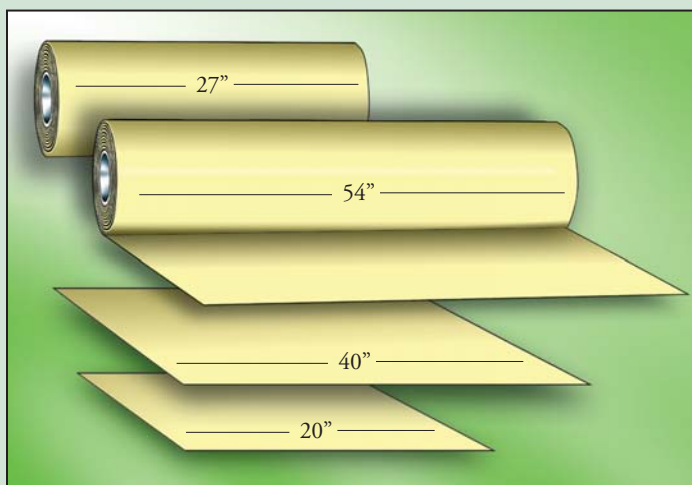
When utilizing photoluminescent Glo Brite® Dots and Arrows to indicate an emergency evacuation route, the directional possibilities are endless. These important safety markings absorb and store energy from ambient light, and are clearly visible in the event of blackout or very smoky conditions. Glo Brite® Dots and Arrows easily affix to most surfaces, making these photoluminescent direction indicators perfect for your low-level emergency egress system.



© Jessup 2006

GLO BRITE® FILM & RIGID SHEETS

Glo Brite® Film and Rigid sheets are available in a bulk format. Glo Brite® 7500 Series films are stocked in 54" and 27" x 150ft. rolls and 20" x 27" sheets (100 sheets/cs). Glo Brite® 7500 Series Rigid sheets are stocked in a 24" x 40" size (10 sheets/cs). Custom roll and sheet sizes are available upon request.



© Jessup 2006

PRODUCT	NUMBERS
Glo Brite® 7520 Series	7520 – 3 – CIR – 20 7520 – 3 – ARW – 20
Glo Brite® 7530 Series	7530 – 3 – CIR – 20 7530 – 3 – ARW – 20
Glo Brite® 7550-HT Series	7550-HT – 3 – CIR – 20 7550-HT – 3 – ARW – 20

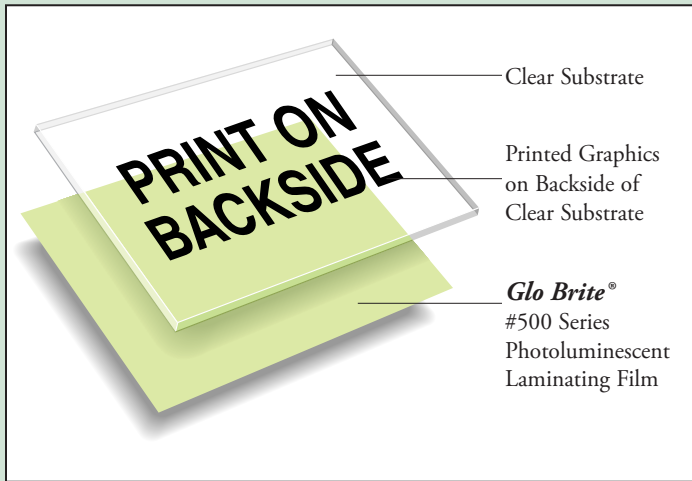
PRODUCT	NUMBERS
Glo Brite® 7520 Series	7520 – 54 x 150 – T 7520 – 20 x 27 7520 – 24 x 40 – R
Glo Brite® 7530 Series	7530 – 54 x 150 – T 7530 – 20 x 27 7530 – 24 x 40 – R
Glo Brite® 7550 Series	7550 – 27 x 150 – T
Glo Brite® 7560 Series	7560 – 27 x 150 – T

TECHNICAL DATA	
Construction:	Flexible laminated film, coated with permanent acrylic pressure-sensitive adhesive and backed by poly-coated release liner
Thickness:	.010 +/- 10% (film/adhesive)
Color:	White/Green (normal light conditions)
Illumination:	High Visibility Yellow/Green
UV Stability:	Excellent
Installation:	Position, peel-off backing and apply to dry, non-oily surface Minimum application temperature 50° F
Availability:	Dots – 3" circles (200 pieces per case) (20pc/pack) Arrows – 3" arrows (200 pieces per case) (20pc/pack) Custom sizes and shapes available upon request

TECHNICAL DATA	
Construction:	Two formats: 1) Flexible laminated film, coated with permanent acrylic pressure-sensitive adhesive and backed by poly-coated release liner 2) Rigid lamination
Thickness:	Two formats: 1) Flexible laminated film - .010 +/- 10% (film/adhesive) 2) Rigid lamination - .060 +/- 10%
Color:	White/Green (normal light conditions)
Illumination:	High Visibility Yellow/Green
UV Stability:	Excellent
Availability:	Film – 54" x 150ft. rolls 27" x 150ft. rolls 20" x 27" sheets Rigid – 24" x 40" sheets

GLO BRITE® LAMINATING FILMS

Using the latest photoluminescent technology, Glo Brite® Laminating Films are flexible films used as a pressure sensitive photoluminescent lamination to a subsurface printed clear substrate. These films absorb and store energy from ambient light. When the lights go out the film is immediately visible. These films can be used for safety signage, egress markings and many other applications.



© Jessup 2006

WELMOUNT™ 80000/90000 SERIES

Welmount™ 80000 and 90000 double-sided foam tapes have been designed to meet the most demanding industrial applications. Welmount™ cross-linked polyethylene foam provides good sealing characteristics and is perfect for bonding to most smooth or irregular surfaces. The perfect mounting tape for all of your safety signage and mounting requirements.



© Jessup 2006

PRODUCT	NUMBERS
Glo Brite® 520	520 – 27X150 – T
Glo Brite® 550	550 – 27X150 – T

FEATURES	BENEFITS
Quality Raw Materials	The closed cell polyethylene foam is flexible and conformable. This allows Welmount™ foam tapes to bond rigid materials to uneven surfaces.
Available	Welmount™ foam tapes are available in rolls from 1/4" to 27" wide, custom sheets and custom die cut parts to meet your exact specifications. A variety of adhesives are available to meet your specific substrate and temperature requirements.

TECHNICAL DATA	
Construction:	Flexible film carrier coated with a pressure sensitive phosphorescent and protected with a polycoated removable release liner.
Thickness:	.0055" (+/- 10%) (Film carrier/Adhesive)
Color:	#520 and #550 White/Green (normal light)
Illumination:	High Visibility Yellow/Green
UV Stability:	#520 and #550 Excellent
Availability:	27" X 150-ft. Rolls

TECHNICAL DATA	
Surface Compatibility:	Most clean, dry, oil free surfaces
Application Temperature:	Apply when above 50° F
Storage Life:	1 Year @ 72° F/50% relative humidity
Material Thickness:	1/32", 1/16", 1/8"
Standard Sizes:	Roll Widths: from 1/4" to 27" Custom die cuts and other sizes available on request
Colors Available:	White and Black
Product Description:	A closed cell cross-linked polyethylene foam utilizes either a synthetic polymer based adhesive or a general purpose acrylic based adhesive. 80000 Series – Synthetic polymer based adhesive system on two sides. 90000 Series – General purpose acrylic based adhesive system on two sides. Custom adhesives and combinations available upon request.

Current Photoluminescent Standards & Codes That Jessup Glo Brite® Products Meet or Exceed

#520/#7520 Glo Brite® - #7530 Glo Brite® - #550/#7550 Glo Brite® - #7560 Glo Brite® Meets or Exceeds the Following Standards and Codes:

DIN 67510-1	Luminance measurement of photoluminescent products
DIN 53438 Part 2/Part 3	Flammability – Reaction to open flame
DIN 53387-1-D-X	Weathering – Resistance against color change during testing
DIN53387-2-F	Radiation – Resistance against color change during testing
DIN 50021-SS	Salt Spray Test – Resistance against any visible change
DIN 74069 ph 6.2.3	Reaction against chemical liquid – Submersion in petrol
DIN 30646 ph. 4.6	Reaction against liquids – Submersion in lye
DIN 30646	Holding Power of the adhesive layer – PSA tensil test
ASTM 162	Surface flammability using a radiant heat energy source
ASTM 648	Critical radiant flux
ASTM 662	Specific optical density of smoke generated by solid materials
SMP 800C	Bombardier toxic gas collection
IMO Resolution A.752(18)	Guidelines for the evaluation, testing and application of low location lighting on passenger ships
ISO 15370	Low location lighting on passenger ships
MIL-L-3891B	Luminescent material and equipment (non-radioactive) <i>(Has been replaced by ASTM E 2030-99, ASTM E 2072-00, ASTM E 2073-00)</i>
PSPA Classifications	#7520/#7530 Glo Brite® - Class B
ASTM E 2072-04	Std. specification for photoluminescent safety markings
ASTM E 2073-04	Std. test method for photopic luminance of photoluminescent markings
ASTM E 2030-04	Guide for recommended uses of of photoluminescent safety markings

#550/#7550 Glo Brite® - #7560 Glo Brite® Meets or Exceeds the Following Standards and Codes:

APTA SS-PS-004-99 – Rev.1	Standard for low location exit path markings
APTA SS-PS-002-98 – Rev. 2	Standard for emergency signage for egress/access of passenger rail equipment
JIS Z 9100	Japanese Industrial Standard for Safety Signs
PSPA Classifications	#7550/#7560 Glo Brite® - Class C

Glo Brite® #7520, 7530, 7550 & 7560 Exceed the Current ASTM Standard:

	ASTM Standard	Glo Brite® 520/7520	Glo Brite® 7530	Glo Brite® 550/7550	Glo Brite® 7560
10.0 min.	20.0 mcd/m ²	56.0 mcd/m ²	72.0 mcd/m ²	146.0 mcd/m ²	181.0 mcd/m ²
60.0 min.	2.8 mcd/m ²	7.0 mcd/m ²	10.6 mcd/m ²	22.7 mcd/m ²	27.7 mcd/m ²

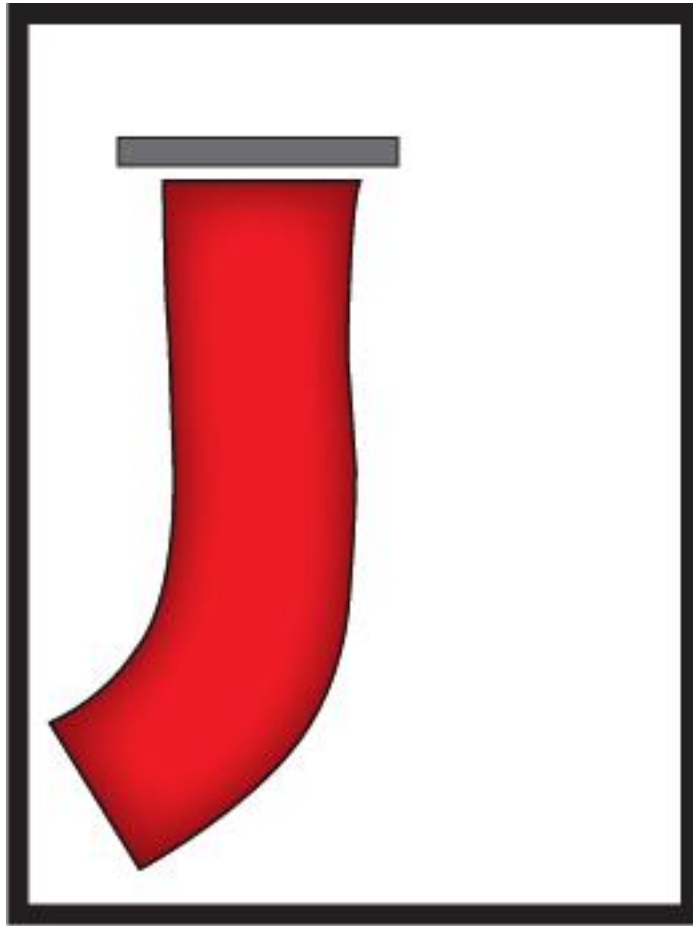


Current Photoluminescent Standards & Codes That Jessup Glo Brite® Products Meet or Exceed

#7000 Glo Brite® Exit Signs

Meets or Exceeds the Following Standards and Codes:

NFPA Life Safety Code 101	7.10 – Marking of means of egress
	13.4.7.7.2 – Floor proximity exit signs
	13.4.7.7.3 – Floor proximity exit signs
NFPA 5000 Building Construction & Safety Code	Sections 11.10
UL 924	Standard for emergency lighting & Power equipment
2003 International Bldg. Code	Section 1011
1999 BOCA Nat. Bldg. Code	Section 1023
1999 Standard Building Code	Section 1016.3
1997 Uniform Bldg. Code	Section 1003.2.8; 1007.2.7; 1007.6.2
OSHA 1910.37	Means of Egress
California State Fire Marshal-Building Materials Listing Program	Listing No. 6200-1617:100
City of Los Angeles Approval	Research Report #RR 25531 (CSI #16530)
2001 California Building Code - High Level & Low Level Exit Sign Regulations	1003.2.8 – Exit Signs 1007.2.7 – Amusement Building Exit Markings 1007.2.8 & 1007.2.9 – Group A, Floor Level Exit Signs & Path Marking 1007.3.12 – Group E, Floor Level Exit Signs 1007.5.13 – Group I, Floor Level Exit Signs 1007.6.2a & 1007.6.2.1a – Group R, Div. I, Floor Level Exit Signs & Path Marking
NYC MEA #	235-05-M 239-05-M Vol.2 240-05-M 241-05-M
ICC Evaluation Service	ES Report #ER-6040
Ontario Building Materials Evaluation Commission	BMEC #03-12-291
CCMC Evaluation Report National Research Council Canada	# 13211-R



JESSUP

